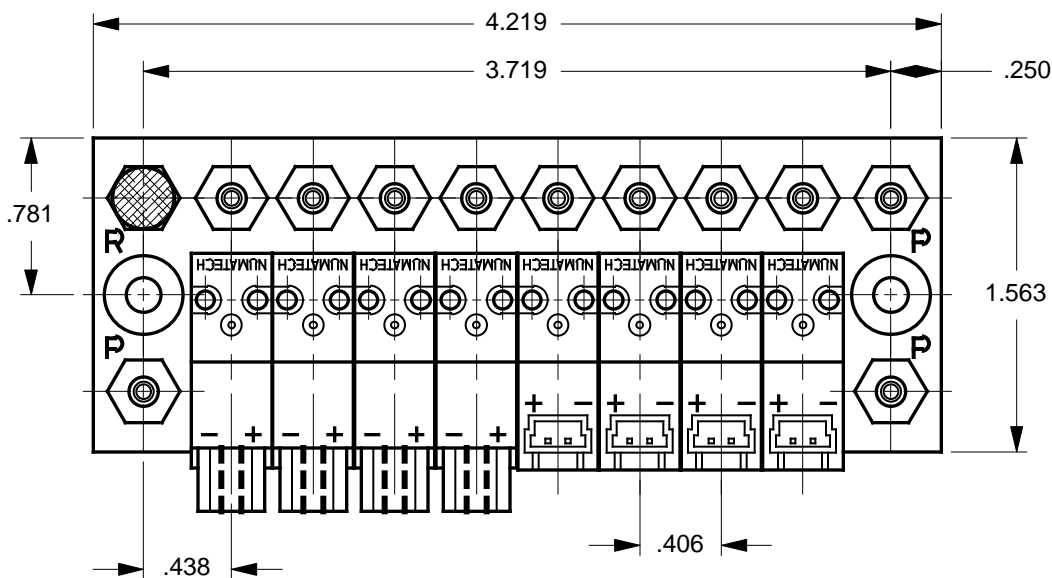


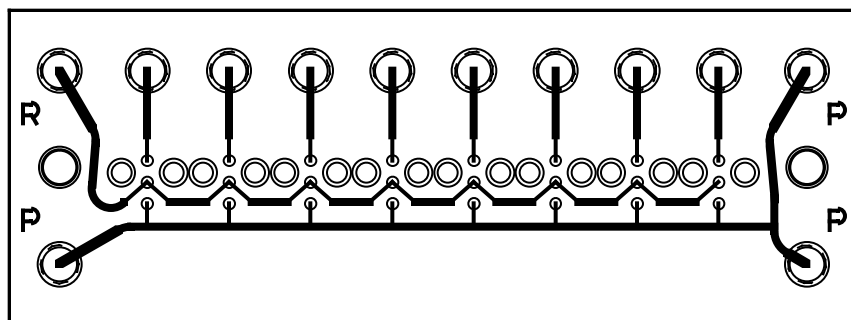
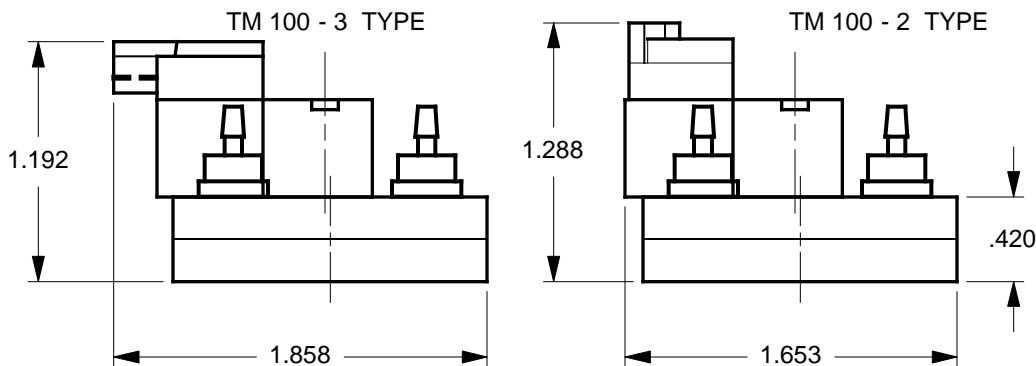
**MODEL: NUM / TM100 - SGL.XX - TOP.#10**  
 WHERE "XX" DESIGNATES THE NUMBER OF VALVE STATIONS

REV		CN #		REVISION CHANGE		DATE	
X1	N/A	DRAWN				13 SEP 99	



**MODEL FEATURES:**

- ACCOMMODATES NUMATECH™ TM-100-2 (RT. ANGLE) TYPE OR TM-100-3 (STRAIGHT) TYPE VALVES.
- SPECIFY FROM 2 TO 16 VALVES. ADD OR SUBTRACT .406" (10.3 MM) OF MANIFOLD LENGTH PER VALVE.
- TOP PORTED FOR EASY ACCESS AND MINIMUM REQUIRED SPACE.
- VALVES ARE MOUNTED VIA EXCLUSIVE 'NO-STRESS' BONDED-IN BRASS INSERTS. M1.7 X .35 THD.
- MULTIPLE (3) "P" PORTS PROVIDE FOR DAISY CHAINING OR SUPPLY PRESSURE DISTRIBUTION.
- THREADED EXHAUST "R" PORT.
- INTERNAL CHANNELS ARE .063" DIAMETER, BRILLIANTLY POLISHED AND WITHSTAND PRESSURE OVER 125 P.S.I.



**NOTES:**

1. MANIFOLDS ARE SUPPLIED WITHOUT ANY HARDWARE OR VALVES. THE COMPONENTS SHOWN ARE FOR ILLUSTRATION PURPOSES ONLY.
2. ALL PORTS ARE THREADED #10-32 UNF - 2B. M5.0 THREADS ARE AVAILABLE ON SPECIAL REQUEST.
3. MOUNTING HOLES ARE .156 DIAMETER FOR #6 SCREWS. USE OF .375 DIAMETER X .040 THICK (MIN) NYLON WASHERS UNDER THE MOUNTING SCREW HEADS ARE HIGHLY RECOMMENDED.
4. MANIFOLD MATERIAL IS POLISHED ACRYLIC. CLEAR (BLUISH TINT) P.V.C. IS ALSO AVAILABLE ON SPECIAL ORDER AT INCREASED PRICE.
5. SPECIFICATIONS SUBJECT TO CHANGE WITHOUT NOTICE.

<b>MicroAdvances</b>	
6073 N.W. 167th STREET, BLDG. C-21 MIAMI, FL. USA 33015 • (305) 556-4801	
NAME: NUM / TM100 - SGL.08 - TOP.#10	
PART/DWG NO: 600247	REV: A
ASSEMBLY: N/A	
DWN BY: J.W.	DATE: 13 SEP 99
DESIGNED BY: XX	
REF: NUM - TM100 - 2&3	
<small>NUMATECH, INC., Wixom, MI 48393</small>	
SCALE: 1 : 1 @ 7.9 X 10.4	SHEET: 1 OF 1