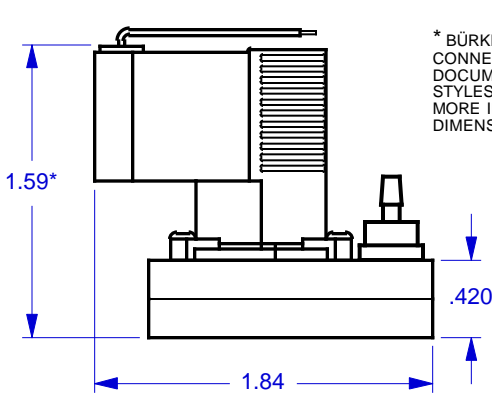
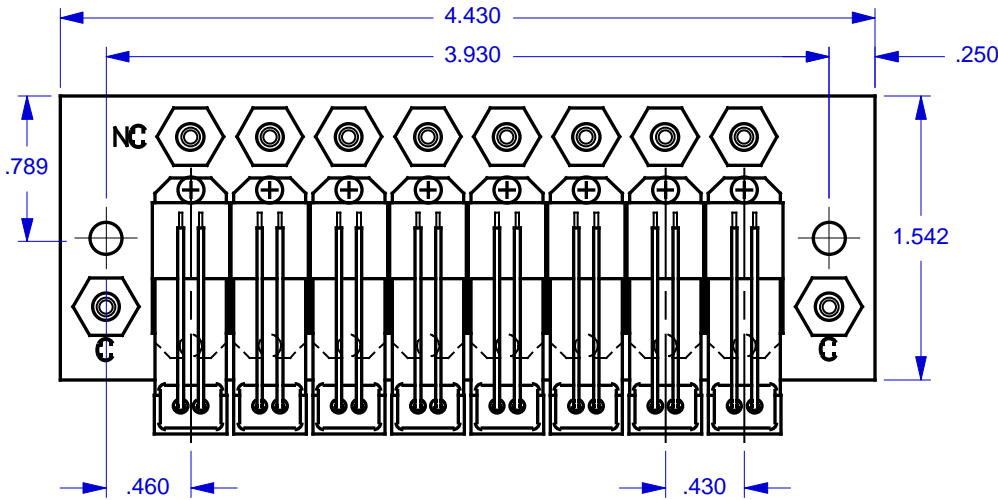


MODEL: BUR/6123-SGL-XX-TOP-10  
 MODEL: BUR/6603-SGL-XX-TOP-10  
 WHERE "XX" DESIGNATES THE NUMBER OF VALVE STATIONS

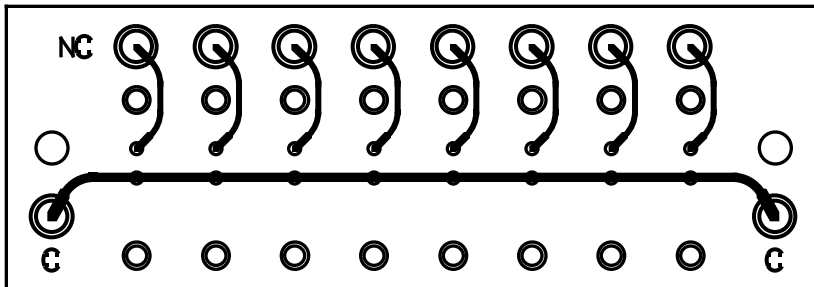
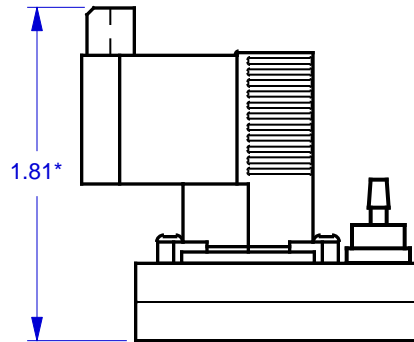
REVISION		CHANGE	DATE
REV	CN #	DESCRIPTION	DATE
X1	N/A	DRAWN	14 JUN 00

MODEL FEATURES:

- ACCOMMODATES BÜRKERT™ 6123 & 6603 TYPE VALVES (2-WAY LIQUID VALVES).
- SPECIFY FROM 2 TO 16 VALVES. ADD OR SUBTRACT .430" OF MANIFOLD LENGTH PER VALVE.
- TOP PORTED FOR EASY ACCESS AND MINIMUM REQUIRED SPACE.
- VALVES ARE MOUNTED VIA EXCLUSIVE 'NO-STRESS' BONDED-IN BRASS INSERTS.
- TWO COMMON PORTS FOR DAISY CHAINING MANIFOLDS.
- INTERNAL CHANNELS ARE .047" WIDE x .047" DEEP, BRILLIANTLY POLISHED AND WITHSTAND PRESSURE OVER 125 P.S.I.



\* BÜRKERT VALVES COME IN OTHER CONNECTOR STYLES. THIS DOCUMENT SHOWS ONLY TWO STYLES. CONTACT BÜRKERT FOR MORE INFORMATION AND DIMENSIONAL DIFFERENCES.



NOTES:

1. MANIFOLDS ARE SUPPLIED WITHOUT ANY HARDWARE OR VALVES. THE COMPONENTS SHOWN ARE FOR ILLUSTRATION PURPOSES ONLY.
2. ALL PORTS ARE THREADED #10-32 UNF - 2B. M5.0 THREADS ARE AVAILABLE ON SPECIAL REQUEST.
3. MOUNTING HOLES ARE .156 DIAMETER FOR #6 SCREWS. USE OF .375 DIAMETER X .040 THICK (MIN) NYLON WASHERS UNDER THE MOUNTING SCREW HEADS ARE HIGHLY RECOMMENDED.
4. MANIFOLD MATERIAL IS POLISHED ACRYLIC. CLEAR (BLUISH TINT) P.V.C. IS ALSO AVAILABLE ON SPECIAL ORDER AT INCREASED PRICE.
5. SPECIFICATIONS SUBJECT TO CHANGE WITHOUT NOTICE.

THIS DRAWING AND/OR SPECIFICATION IS THE PROPERTY OF MICROADVANCES, IS ISSUED IN STRICT CONFIDENCE, AND SHALL NOT BE REPRODUCED, COPIED, OR USED AS THE BASIS FOR THE MANUFACTURE OR SALE OF APPARATUS OR COMPONENT PARTS THEREOF WITHOUT PRIOR WRITTEN PERMISSION.

**MicroAdvances**

6073 N.W. 167th STREET, BLDG. C-21  
 MIAMI, FL. USA 33015 • (305) 556-4801

NAME: BUR/6103-SGL-08-TOP-10  
 PART/DWG NO: 600286 REV: A  
 ASSEMBLY: N/A  
 DWN BY: J.W. DATE: 14 JUNE 00  
 DESIGNED BY: XX  
 REF: BUR/6123, 6603

BÜRKERT CRONTROMATIC USA, Irvine, CA 92614

SCALE: 1 : 1 @ 7.9 X 10.4 SHEET: 1 OF 1