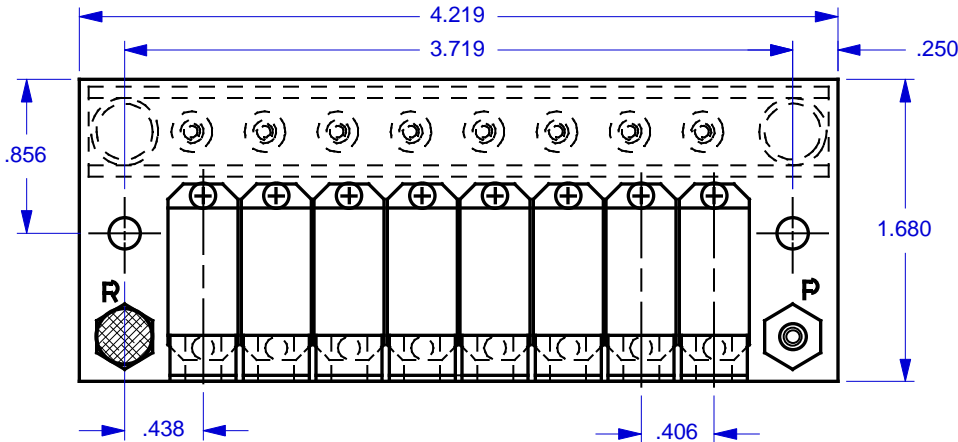


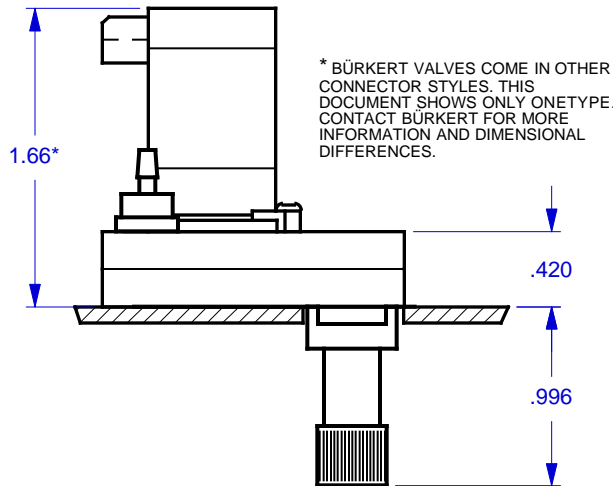
MODEL: BUR/6104-SGL-XX-BOT-QD
 WHERE "XX" DESIGNATES THE NUMBER OF VALVE STATIONS

REVISION CHANGE			
REV	CN #	DESCRIPTION	DATE
X1	N/A	DRAWN	01 JUN 00

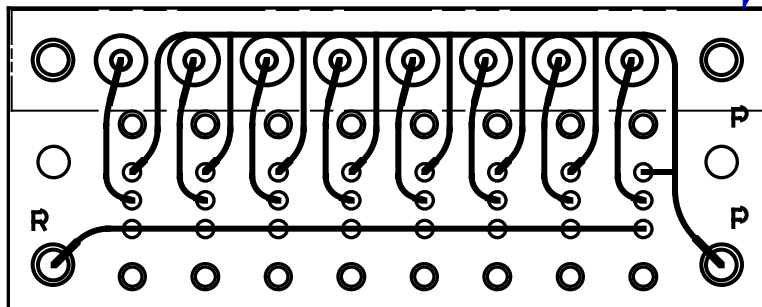


MODEL FEATURES:

- ACCOMMODATES BÜRKERT™ 6104 TYPE VALVES.
- SPECIFY FROM 3 TO 12 VALVES. ADD OR SUBTRACT .406" (10.3 MM) OF MANIFOLD LENGTH PER VALVE.
- TOP PORTED FOR EASY ACCESS AND MINIMUM REQUIRED SPACE.
- USES EXCLUSIVE MULTIPLE TUBING QUICK-DISCONNECT ASSEMBLY (SOLD SEPARATELY), WHICH INSTALLS OR REMOVES QUICKLY WITH 2 THUMBSCREWS.
- VALVES ARE MOUNTED VIA EXCLUSIVE 'NO-STRESS' BONDED-IN BRASS INSERTS.
- THREADED EXHAUST "R" PORT.
- INTERNAL CHANNELS ARE .078" WIDE x .078" DEEP, BRILLIANTLY POLISHED AND WITHSTAND PRESSURE OVER 125 P.S.I.



PANEL CUT-OUT REQD:
 .563 H x 4.18 W MIN. RECOMMENDED FOR 8 VALVE MANIFOLD.
 FOR OTHER MANIFOLDS, ADD OR SUBTRACT .406" (10.3 MM) TO WIDTH PER VALVE



NOTES:

1. MANIFOLDS ARE SUPPLIED WITHOUT ANY HARDWARE OR VALVES. THE COMPONENTS SHOWN ARE FOR ILLUSTRATION PURPOSES ONLY.
2. ALL PORTS (EXCEPT QUICK-DISCONNECT) ARE THREADED #10-32 UNF - 2B. M5.0 THREADS ARE AVAILABLE ON SPECIAL REQUEST.
3. MOUNTING HOLES ARE .156 DIAMETER FOR #6 SCREWS. USE OF .375 DIAMETER X .040 THICK (MIN) NYLON WASHERS UNDER THE MOUNTING SCREW HEADS ARE HIGHLY RECOMMENDED.
4. MANIFOLD MATERIAL IS POLISHED ACRYLIC. CLEAR (BLUISH TINT) P.V.C. IS ALSO AVAILABLE ON SPECIAL ORDER AT INCREASED PRICE.
5. SPECIFICATIONS SUBJECT TO CHANGE WITHOUT NOTICE.

MicroAdvances

6073 N.W. 167th STREET, BLDG. C-21
 MIAMI, FL. USA 33015 • (305) 556-4801

NAME: BUR/6104-SGL-08-BOT-QD
PART/DWG NO: 600280 **REV:** A
ASSEMBLY: N/A
DWN BY: J.W. **DATE:** 01 JUN 00
DESIGNED BY: XX
REF: **BUR/6104**

BÜRKERT CRONTROMATIC USA, Irvine, CA 92614

SCALE: 1 : 1 @ 7.9 X 10.4 **SHEET:** 1 OF 1

THIS DRAWING AND/OR SPECIFICATION IS THE PROPERTY OF MICROADVANCES, IS ISSUED IN STRICT CONFIDENCE, AND SHALL NOT BE REPRODUCED, COPIED, OR USED AS THE BASIS FOR THE MANUFACTURE OR SALE OF APPARATUS OR COMPONENT PARTS THEREOF WITHOUT PRIOR WRITTEN PERMISSION.