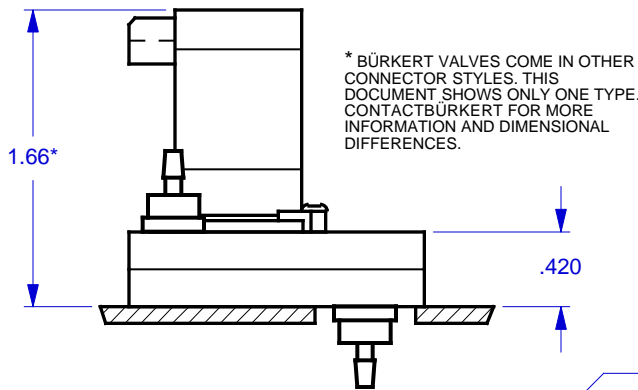
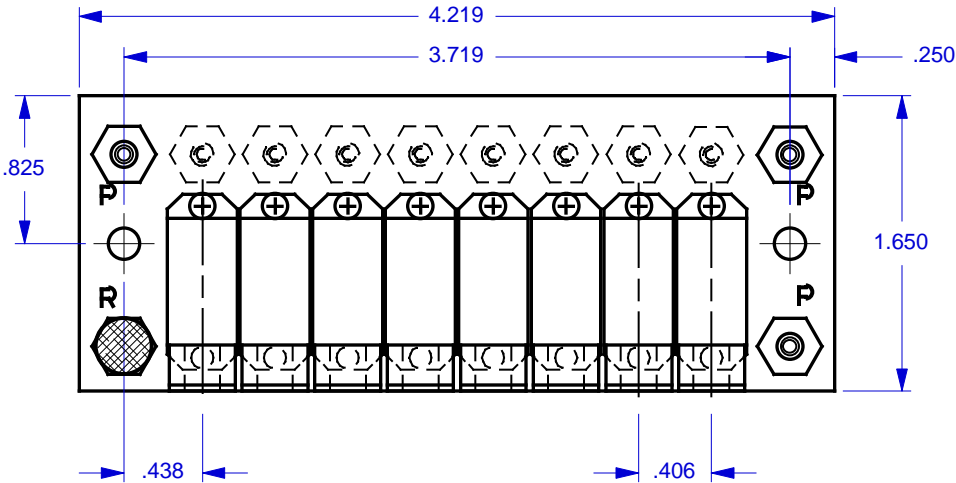


**MODEL: BUR/6104-SGL-XX-BOT-10**  
 WHERE "XX" DESIGNATES THE NUMBER OF VALVE STATIONS

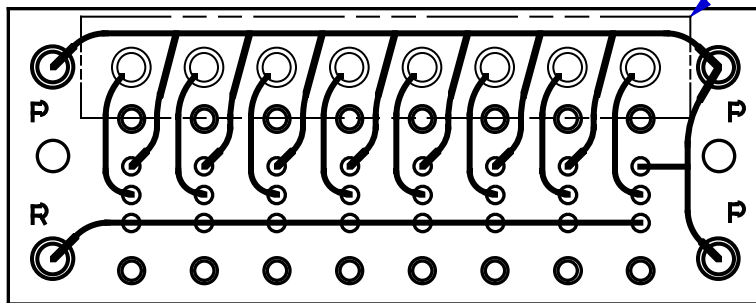
REVISION CHANGE			
REV	CN #	DESCRIPTION	DATE
X1	N/A	DRAWN	31 MAY 00

**MODEL FEATURES:**

- ACCOMMODATES BÜRKERT™ 6104 TYPE VALVES.
- SPECIFY FROM 2 TO 16 VALVES. ADD OR SUBTRACT .406" (10.3 MM) OF MANIFOLD LENGTH PER VALVE.
- TOP PORTED FOR EASY ACCESS AND MINIMUM REQUIRED SPACE.
- VALVES ARE MOUNTED VIA EXCLUSIVE 'NO-STRESS' BONDED-IN BRASS INSERTS.
- MULTIPLE (3) "P" PORTS PROVIDE FOR DAISY CHAINING OR SUPPLY PRESSURE DISTRIBUTION.
- THREADED EXHAUST "R" PORT.
- INTERNAL CHANNELS ARE .078" WIDE x .078" DEEP, BRILLIANTLY POLISHED AND WITHSTAND PRESSURE OVER 125 P.S.I.



PANEL CUT-OUT REQD:  
 .563 H x 3.41 W MIN. RECOMMENDED FOR 8 VALVE MANIFOLD. FOR OTHER MANIFOLDS, ADD OR SUBTRACT .406" (10.3 MM) TO WIDTH PER VALVE



**NOTES:**

1. MANIFOLDS ARE SUPPLIED WITHOUT ANY HARDWARE OR VALVES. THE COMPONENTS SHOWN ARE FOR ILLUSTRATION PURPOSES ONLY.
2. ALL PORTS ARE THREADED #10-32 UNF - 2B. M5.0 THREADS ARE AVAILABLE ON SPECIAL REQUEST.
3. MOUNTING HOLES ARE .156 DIAMETER FOR #6 SCREWS. USE OF .375 DIAMETER X .040 THICK (MIN) NYLON WASHERS UNDER THE MOUNTING SCREW HEADS ARE HIGHLY RECOMMENDED.
4. MANIFOLD MATERIAL IS POLISHED ACRYLIC. CLEAR (BLUISH TINT) P.V.C. IS ALSO AVAILABLE ON SPECIAL ORDER AT INCREASED PRICE.
5. SPECIFICATIONS SUBJECT TO CHANGE WITHOUT NOTICE.

**MicroAdvances**

6073 N.W. 167th STREET, BLDG. C-21  
 MIAMI, FL. USA 33015 • (305) 556-4801

NAME: BUR/6104-SGL-08-BOT-10  
 PART/DWG NO: 600279 REV: A  
 ASSEMBLY: N/A  
 DWN BY: J.W. DATE: 01 JUN 00  
 DESIGNED BY: XX  
 REF: **BUR/6104**

BÜRKERT CRONTRONATIC USA, Irvine, CA 92614

SCALE: 1 : 1 @ 7.9 X 10.4 SHEET: 1 OF 1